

ALCOVE GLORIA

On a high with luxury!



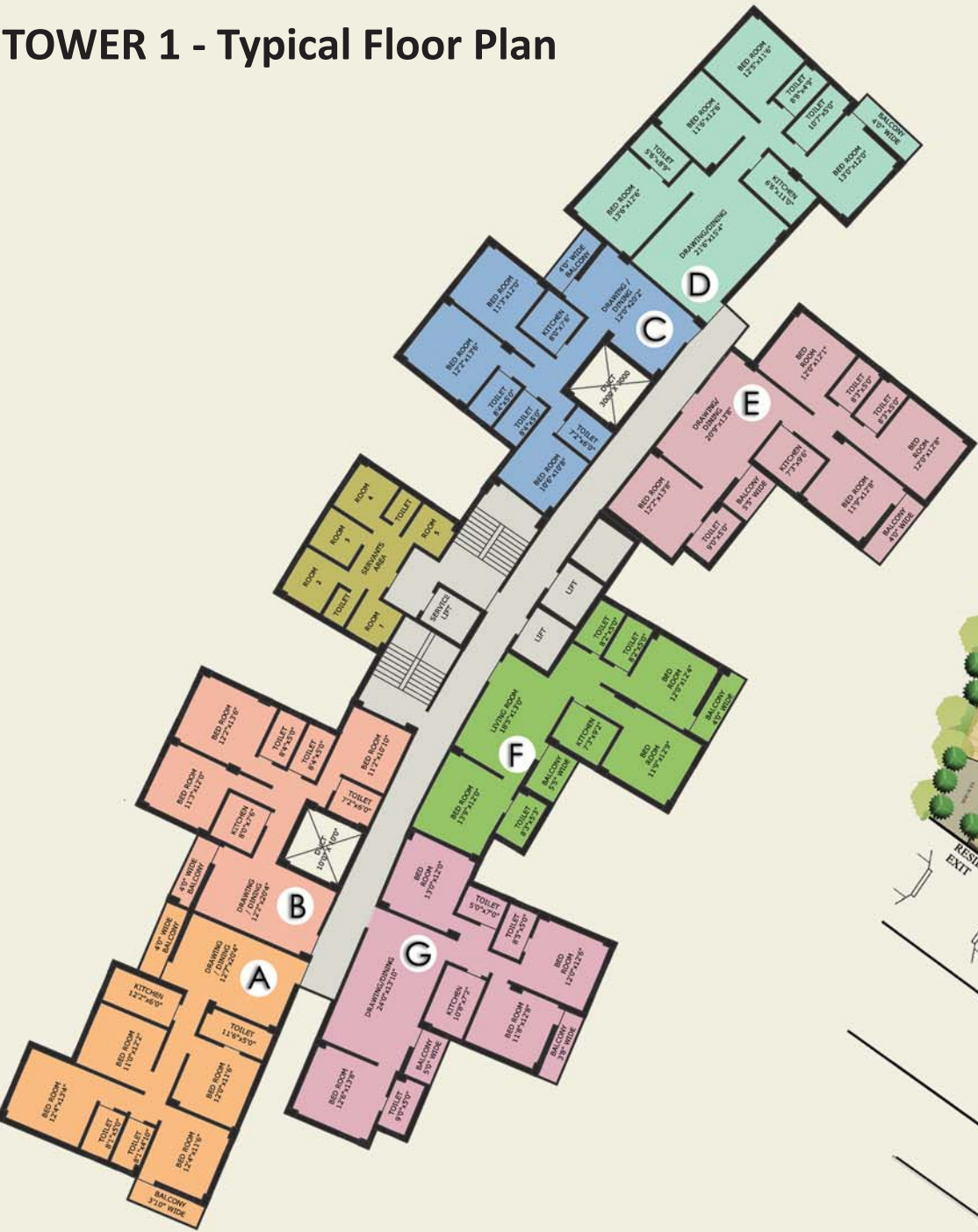
Dreams stand tall!

Welcome to Alcove Gloria where life uncovers its treasures and fills you with happiness every moment. Where grandeur is the order of the day. The tallest towers on VIP road, a house here can truly give you a high!

- 2B+LG+UG+17
- 3/4 BHK apartments with Servant quarters



TOWER 1 - Typical Floor Plan



AREA STATEMENT

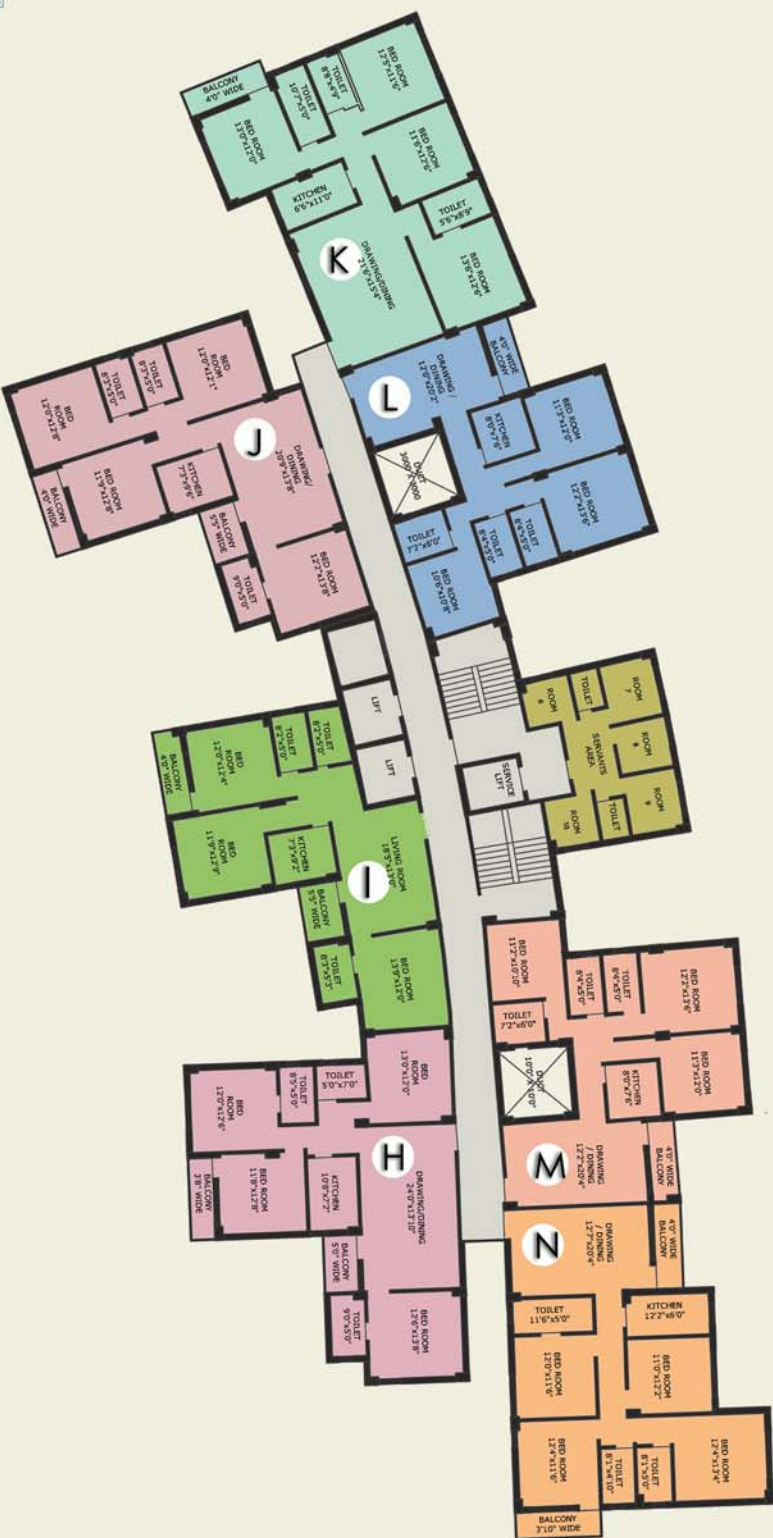
Tower 1 & 2
1st to 17th Floor

Flat Type	No of Bed Rooms	Built-up Area (sq ft)	Saleable Area (sq ft)
A / N	4	1419	1892
B / M	3	1142	1523
C / L	3	1141	1521
D / K	4	1455	1940
E / J	4	1405	1873
F / I	3	1211	1615
G / H	4	1450	1934

Servant Quarters
Tower 1 & 2

S.Q. No	Saleable Area (sq ft)
1 / 10	79
2 / 9	109
3 / 8	86
4 / 7	109
5 / 6	72

Site Plan



TOWER 2 - Typical Floor Plan

Specifications & Amenities

Bringing health into your lifestyle

Alcove Gloria is spread out over 193 cottahs of landscaped gardens, terraces & fountains with sunshine and quiet, much just like a country resort. Easy-access driveways lead in and out of two large basement car parking lots.



Club Facilities

- Swimming pool
- Gym, health club with massage & steam room and jacuzzi
- Indoor games-pool table, table tennis, other board games
- Multi-purpose Court
- Yoga and meditation hall
- AC community hall/lounge hall

Basic Facilities

- Landscape garden
- Children's play area with equipment
- Round the clock security with surveillance camera in all common areas
- Water filtration with de-ionisation plant
- Intercom facility
- 24 x 7 Generator Backup
- Garbage Chute
- Service cum Stretcher Elevators

Appointed with care, wall-to-wall

Structure: R.C.C frame structure

External Finish: Latest available durable outer finish

Staircase: Spacious staircase in Kota Stone

Lobby: Ground floor lobby with granite/marble/ vitrified tiles. Floor lobby with good quality tiles

Balcony: Decorative with MS railings

Flooring: Vitrified tiles in living room, dining room, bedrooms, balcony & kitchen, anti-skid tiles in toilets

Kitchen: Granite slab counter with stainless steel sink. Ceramic tiles upto 2 ft height above platform

Toilets: Tiles up to door height, hot & cold water point, European style WC and basin of reputed make, Elegant CP fittings of Jaquar or equivalent make.

Windows: Anodised aluminium windows

Doors: Entrance paneled polished door and others good quality flush doors

Lifts: High speed lifts of reputed make

Fire Fighting: All provision for modern fire fighting

Interior Finish: Smooth finish plaster of paris on walls

Electricals: Concealed copper wiring with latest modular switches, points for AC, TV & Telephone in living room & all bedrooms, power points and exhaust fan points in kitchen & toilets

Water Supply: 24 hrs filtered water supply

Near and dear!

From the airport to shopping malls, schools, colleges to restaurants, offices and other destinations of everyday, it is all in close proximity. A premium location that has the coveted combination of peace and buzz!



At Alcove, we endeavor to not just build buildings, but to create dream havens. Our promise of delivering a better tomorrow is constructed on a glorious yesterday, built brick by brick. With over 30 years of experience in the real estate sphere, we are ordained to craft unique lifestyles and redesign skylines. Quality, finesse, security and timely delivery are not just our motto but our promise towards a future which is sure to witness constructions defining modern architecture.



Ganapati, 68/2 Harish Mukherjee Road Kolkata-700 025, Call : +91 33 3984 2210/2100

Email : marketing@alcoverealty.in, Website : alcoverealty.in